

Model 375ADA

Reduced Pressure Detector Assembly

Application

Designed for installation on water lines in fire protection systems to protect against both backsiphonage and back-pressure of contaminated water into the potable water supply. The Model 375ADA shall provide protection where a potential health hazard exists. Incorporates metered by-pass to detect leaks and unauthorized water use.

Standards Compliance

- ASSE® Listed 1047 (2 1/2" - 8")
- CSA® Certified B64.4 (2-1/2" - 8")
- AWWA Compliant C550
- UL® Classified
- C-UL® Classified
- FM® Approved
- Approved by the Foundation for Cross Connection Control and Hydraulic Research at the University of Southern California.
- NYC MEA 104-05-M
- Meets the requirements of NSF/ANSI 61*

*(0.25% MAX. WEIGHTED AVERAGE LEAD CONTENT)

By-Pass Backflow Assembly 3/4" Model 975XLD

Materials

Main valve body	Ductile Iron ASTM A 536
Access covers	Ductile Iron ASTM A 536
Coatings	NSF Approved fusion epoxy finish
Internals	Stainless steel, 300 Series
	NORYL™
Fasteners & Springs	Stainless Steel, 300 Series
Elastomers	EPDM (FDA approved)
	Buna Nitrile (FDA approved)
Polymers	NORYL™
Sensing line	Stainless steel, braided hose

Features

Sizes:	2 1/2", 3", 4", 6", 8", 10"
Maximum working water pressure	175 PSI
Maximum working water temperature	140°F
Hydrostatic test pressure	350 PSI
End connections (Grooved for steel pipe)	AWWA C606
(Flanged bolt pattern)	ASME B16.42
	Class 150

*2 1/2" & 3" sizes use 4" body & reducer coupling

Dimensions & Weights (do not include pkg.)

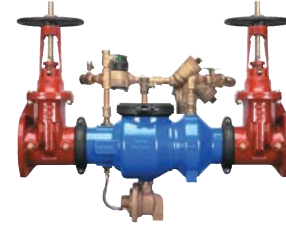
MODEL 375ADA SIZE		WEIGHT									
		WITHOUT GATES		WITH OS&Y GATES (GXF)		WITH OS&Y GATES (GXG)		WITH BUTTERFLY VALVES (GXG)		WITH BUTTERFLY VALVES (GXF)	
in.	mm	lbs.	kg	lbs.	kg	lbs.	kg	lbs.	kg	lbs.	kg
2 1/2	65	112	50.8	214	97	206	93.5	154	70	164	74
3	80	111	50	231	104.8	221	100.3	156	71	169	77
4	100	98	45	252	114	226	103	146	66	168	76
6	150	151	69	387	176	357	162	225	102	255	116
8	200	321	146	797	362	773	351	465	211	511	232
10	250	374	170	1059	480	937	425	590	268	648	294

MODEL 375ADA SIZE		DIMENSION (approximate)																			
		A		A WITH BUTTERFLY VALVES		B LESS GATE VALVES		C		D		E OS&Y OPEN		E OS&Y CLOSED		E WITH BUTTERFLY VALVES		F		H	
		in.	mm	in.	mm	in.	mm	in.	mm	in.	mm	in.	mm	in.	mm	in.	mm	in.	mm	in.	mm
2 1/2	65	35 1/8	892	32 1/8	816	20 1/8	511	4 1/2	114	9	229	16 3/8	416	13 7/8	352	17	432	11	279	9 5/8	247
3	80	36 1/8	918	33	838	20 1/8	511	4 1/2	114	9	229	18 7/8	479	15 5/8	397	17	432	11	279	9 5/8	247
4	100	38 1/4	972	33 1/4	845	19 7/8	505	4 1/2	114	9	229	22 3/4	578	18 1/4	464	17	432	11	279	9 5/8	247
6	150	47 1/4	1200	40 1/4	1022	25 7/8	657	5 1/2	140	10 1/2	267	30 1/8	765	23 3/4	603	17 1/2	445	12 3/8	314	13	330
8	200	62	1575	55	1397	38 1/2	978	10	254	12	305	37 3/4	959	29 1/4	743	16 15/16	430	15 3/8	391	17 5/16	440
10	250	64 5/8	1642	59	1499	38 1/2	978	10	254	12	305	45 3/4	1162	35 3/8	899	16 15/16	430	15 3/8	391	17 1/8	435

Zurn Industries, LLC | Wilkins
1747 Commerce Way, Paso Robles, CA U.S.A. 93446 Ph. 855-663-9876, Fax 805-238-5766

In Canada | Zurn Industries Limited
3544 Nashua Drive, Mississauga, Ontario L4V 1L2 Ph. 905-405-8272, Fax 905-405-1292

www.zurn.com



Options

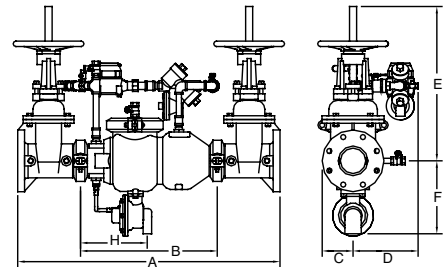
(Suffixes can be combined)

- ☐ - with OS & Y gate valves (standard)
- ☐ L - less shut-off valves (grooved body connections)
- ☐ LM - less water meter
- ☐ RM - with remote reading meter
- ☐ - with gallon meter (standard)
- ☐ CFM - with cu ft/min meter
- ☐ G - with groove end gate valves
- ☐ FG - with flanged inlet gate connection and grooved outlet gate connection
- ☐ BG - with grooved end butterfly valves with integral supervisory switches
- ☐ BF - with flanged end butterfly valves with integral supervisory switches
- ☐ PI - with Post Indicator Gate Valve

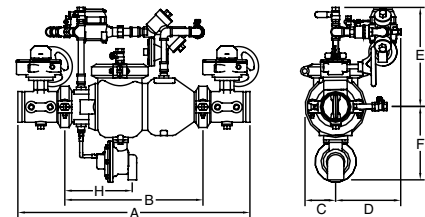
Accessories

- ☐ Air gap (Model AG)
- ☐ Repair kit (rubber only)
- ☐ Thermal expansion tank (Model XT)
- ☐ OS & Y Gate valve tamper switch (OSY-40)
- ☐ QT-SET Quick Test Fitting Set

MODEL
375ADA with
standard OS&Y



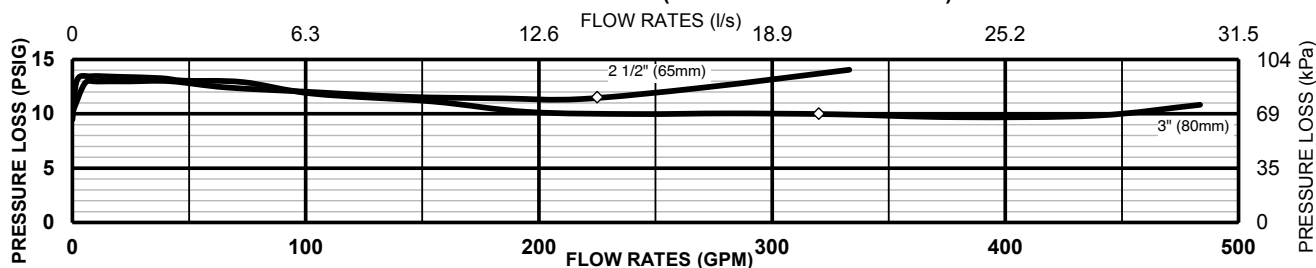
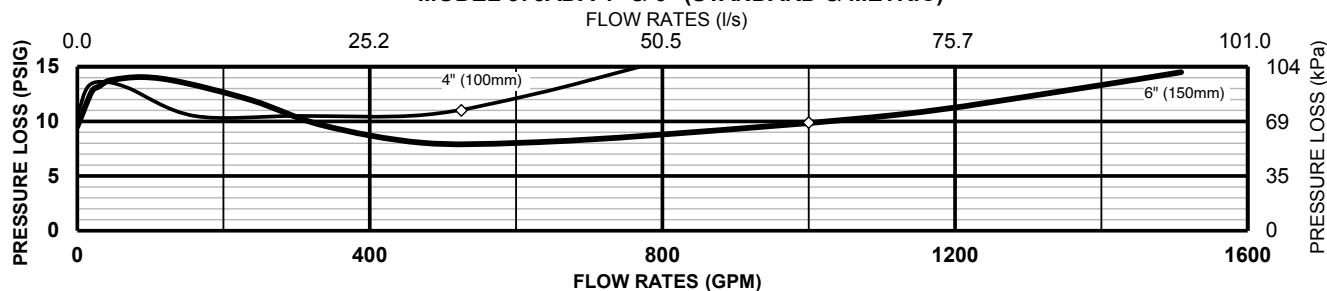
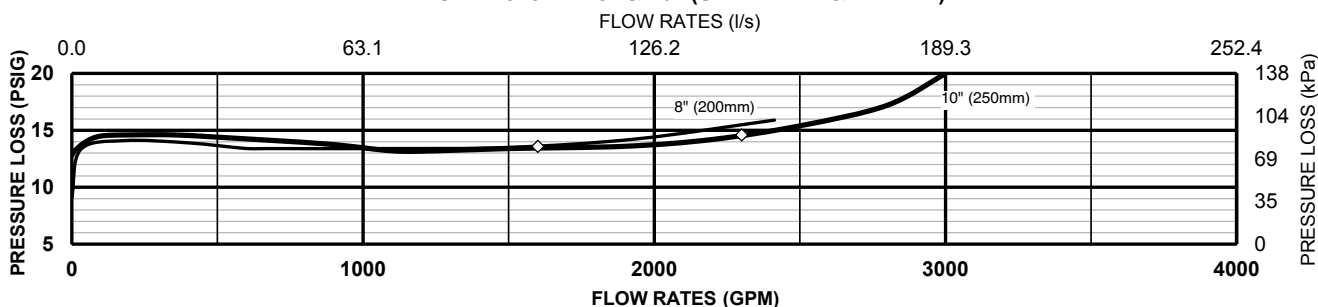
MODEL
375ADA with
BG option



Attention: Model 375ADA (grooved body) and Model 375DA (flange body) have different lay lengths.

Relief Valve
discharge port:
2 1/2" - 6" - 2.75 sq. in.
8" - 10" - 3.69 sq. in.

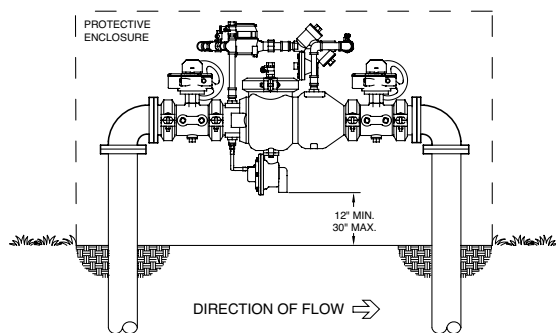
Rev. J
Date: 6/19
Document No. BF-375ADA
Patent No. 5, 913, 331
Product No. Model 375ADA

MODEL 375ADA 2-1/2" - 3" (STANDARD AND METRIC)**MODEL 375ADA 4" & 6" (STANDARD & METRIC)****MODEL 375ADA 8" & 10" (STANDARD & METRIC)****Typical Installation**

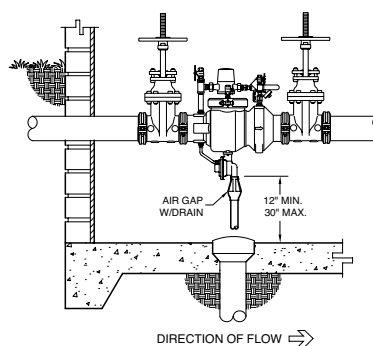
Local codes shall govern installation requirements. To be installed in accordance with the manufacturer's instructions and the latest edition of the Uniform Plumbing Code. Unless otherwise specified, the assembly shall be mounted at a minimum of 12" (305mm) and a maximum of 30" (762mm) above adequate drains with sufficient side clearance for testing and maintenance. The installation shall be made so that no part of the unit can be submerged.

Capacity thru Schedule 40 Pipe (GPM)

Pipe size	5 ft/sec	7.5 ft/sec	10 ft/sec	15 ft/sec
2 1/2"	75	112	149	224
3"	115	173	230	346
4"	198	298	397	595
6"	450	675	900	1351
8"	780	1169	1559	2339
10"	1229	1843	2458	3687
12"	1763	2644	3525	5288



OUTDOOR INSTALLATION (MODEL 375ADA with BG option)



INDOOR INSTALLATION (MODEL 375ADA with G option)

Specifications

The Reduced Pressure Detector Backflow Prevention Assembly shall be certified to NSF/ANSI 61, ASSE® Listed 1047, and supplied with full port OS & Y gate valves. The main body and access cover shall be epoxy coated ductile iron (ASTM A 536), the seat ring and check valve shall be NORLYL™, the stem shall be stainless steel (ASTM A 276) and the seat disc elastomers shall be EPDM. The checks and the relief valve shall be accessible for maintenance without removing the device from the line. The Reduced Pressure Detector Backflow Prevention Assembly shall be a ZURN WILKINS Model 375ADA.

Zurn Industries, LLC | Wilkins

1747 Commerce Way, Paso Robles, CA U.S.A. 93446 Ph. 855-663-9876, Fax 805-238-5766

In Canada | Zurn Industries Limited

3544 Nashua Drive, Mississauga, Ontario L4V 1L2 Ph. 905-405-8272, Fax 905-405-1292

www.zurn.com