



Maxim™ Series M300Na

Double Check Detector Assemblies
Sizes: 2½" – 4" (65 – 100mm)



Features

- Extremely Compact Design
- 70% Lighter than Traditional Designs
- 304 (Schedule 40) Stainless Steel Housing & Sleeve
- Groove Fittings Allow Integral Pipeline Adjustment
- Patented Bi-Link Check Provides Lowest Pressure Loss
- Unmatched Ease of Serviceability
- Available with Grooved Butterfly Valve Shutoffs
- Available for N Pattern Installations
- Replaceable Check Disc Rubber

The Maxim M300Na Double Check Detector Assemblies are used to prevent backflow of pollutants, that are objectionable but not toxic, from entering the potable water supply system. The Maxim M300Na may be installed under continuous pressure service and may be subjected to backpressure. The Maxim M300Na are used primarily on fire line sprinkler systems when it is necessary to monitor unauthorized use of water. For use in non-health hazard applications.

Specifications

The Double Check Detector Assemblies shall consist of two independent Bi-Link Check modules within a single housing, sleeve access port, four test cocks and two drip tight shutoff valves. Bi-Link Checks shall be removable and serviceable, without the use of special tools. The housing shall be constructed of 304 (Schedule 40) stainless steel pipe with groove end connections. Bi-Link Checks shall have reversible elastomer discs and in operation shall produce drip tight closure against the reverse flow of liquid caused by backpressure or backsiphonage. The bypass assembly consists of a meter, which registers in either gallon or cubic measurements, a double check valve assembly and required test cocks. Assembly shall be a Maxim M300Na as manufactured by the Ames Company.

Job Name _____ Contractor _____

Job Location _____ Approval _____

Engineer _____ Contractor's P.O. No. _____

Approval _____ Representative _____

Ames product specifications in U.S. customary units and metric are approximate and are provided for reference only. For precise measurements, please contact Ames Technical Service. Ames reserves the right to change or modify product design, construction, specifications, or materials without prior notice and without incurring any obligation to make such changes and modifications on Ames products previously or subsequently sold.

Configurations

- “N” pattern horizontal

Materials

- Housing & Sleeve: 304 (Schedule 40) Stainless Steel
- Elastomers: EPDM and Buna-N
- Bi-Link Checks: Noryl®, Stainless Steel
- Check Discs: Reversible EPDM
- Test Cocks: Bronze Body Nickel Plated
- Pins & Fasteners: 300 Series Stainless Steel
- Springs: Stainless Steel

Available Models

OSY - UL/FM flanged outside stem and yoke resilient seated gate valves

BFG - UL/FM grooved gear operated butterfly valves w/tamper switch

*OSY FxG - Flanged inlet gate connection and grooved outlet gate connection

*OSY GxF - Grooved inlet gate connection and flanged outlet gate connection

*OSY GxG - Grooved inlet gate connection and grooved outlet gate connection

Available with grooved NRS gate valves - consult factory*

Post indicator plate and operating nut available - consult factory*

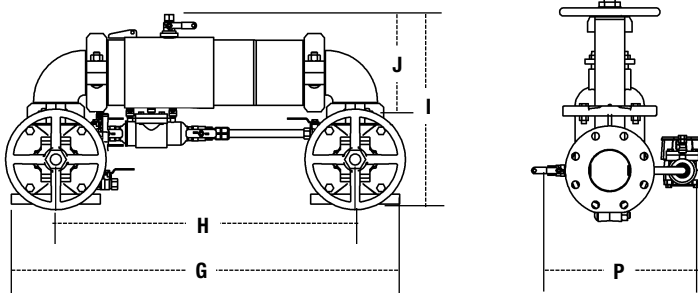
*Consult factory for dimensions

Pressure — Temperature

Temperature Range: 33°F – 110°F (0.5°C – 43°C)

Maximum Working Pressure: 175psi (12.1 bar)

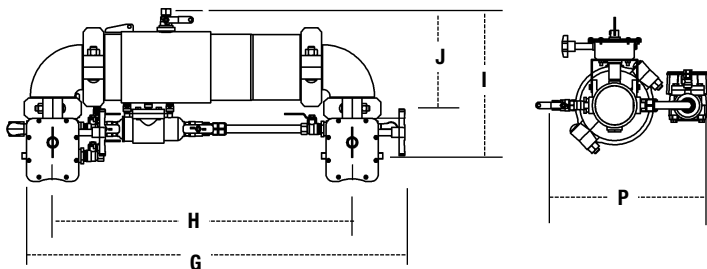
Dimensions — Weights



M300Na

SIZE (DN)		DIMENSIONS						WEIGHT					
in	mm	G		H		I		J		P		M300Na	
		in	mm	in	mm	in	mm	in	mm	in	mm	lbs.	kgs.
2½	65	29½	738	22¾	578	15½	402	8½	223	13½	335	147	67
3	80	30½	775	22¾	578	17½	435	9½	233	14½	368	172	78
4	100	39¾	1010	30¾	781	20¾	518	11½	297	15½	386	256	116

Note: For 2½" - 4" horizontal/vertical instructions, send for literature ES-A-M-300/300N.



M300NaBFG

SIZE (DN)		DIMENSIONS						WEIGHT					
in.	mm	G		H		I		J		P		M300NaBFG	
		in.	mm	in.	mm	in.	mm	in.	mm	in.	mm	lbs.	kgs.
2½	65	29½	759	22½	562	14½	379	8½	223	13	330	78	35
3	80	30¾	781	22¾	578	15½	392	9½	233	13½	343	81	37
4	100	39	991	30¾	781	18	457	11½	297	15	381	156	71

Note: For 2½" - 4" horizontal/vertical instructions, send for literature ES-A-M-300/300N.

Noryl® is a registered trademark of SABIC Innovative Plastics™.

Approvals



1048



28S6



B64.5



Approved

For additional approval information please contact the factory or visit our website at www.amesfirewater.com

Capacity

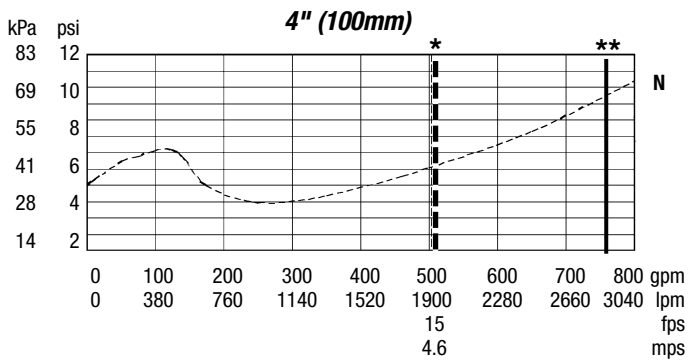
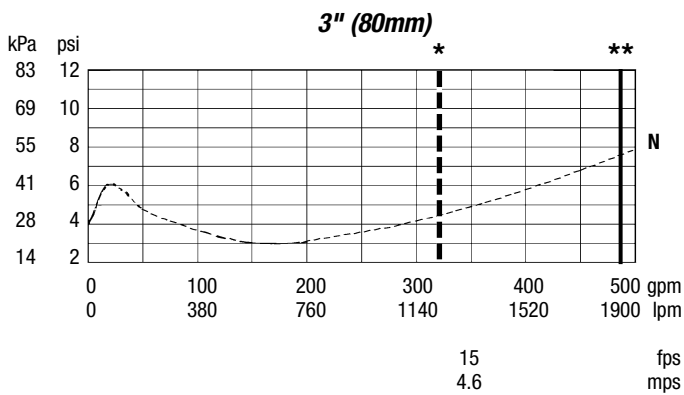
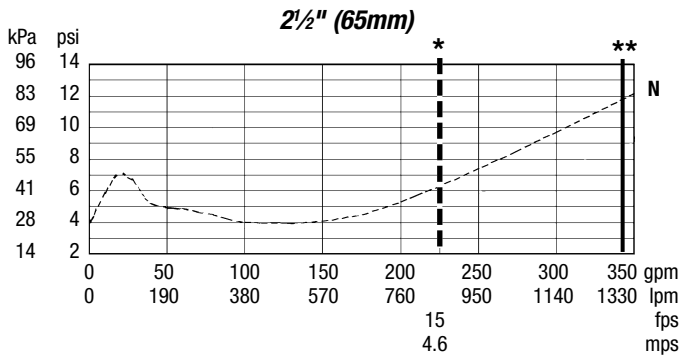
UL/FM Certified Flow Characteristics

Flow characteristics collected using butterfly shutoff valves.

See literature S-MAXIM-200, 300 for gate valve flow characteristics

* = Rated flow ** = UL Tested

---- N-Pattern



IMPORTANT: INQUIRE WITH GOVERNING AUTHORITIES FOR LOCAL INSTALLATION REQUIREMENTS

For additional information, visit our web site at: www.amesfirewater.com



A Watts Water Technologies Company

www.amesfirewater.com



USA: Backflow- Sacramento, CA • Tel: (916) 928-0123 • Fax: (916) 928-9333

Control Valves- Houston, TX • Tel: (713) 943-0688 • Fax: (713) 944-9445

Canada: Burlington, ON • Tel: (905) 332-4090 • Fax: (905) 332-7068

ES-A-M300Na 0836

© 2011 Ames Fire & Waterworks